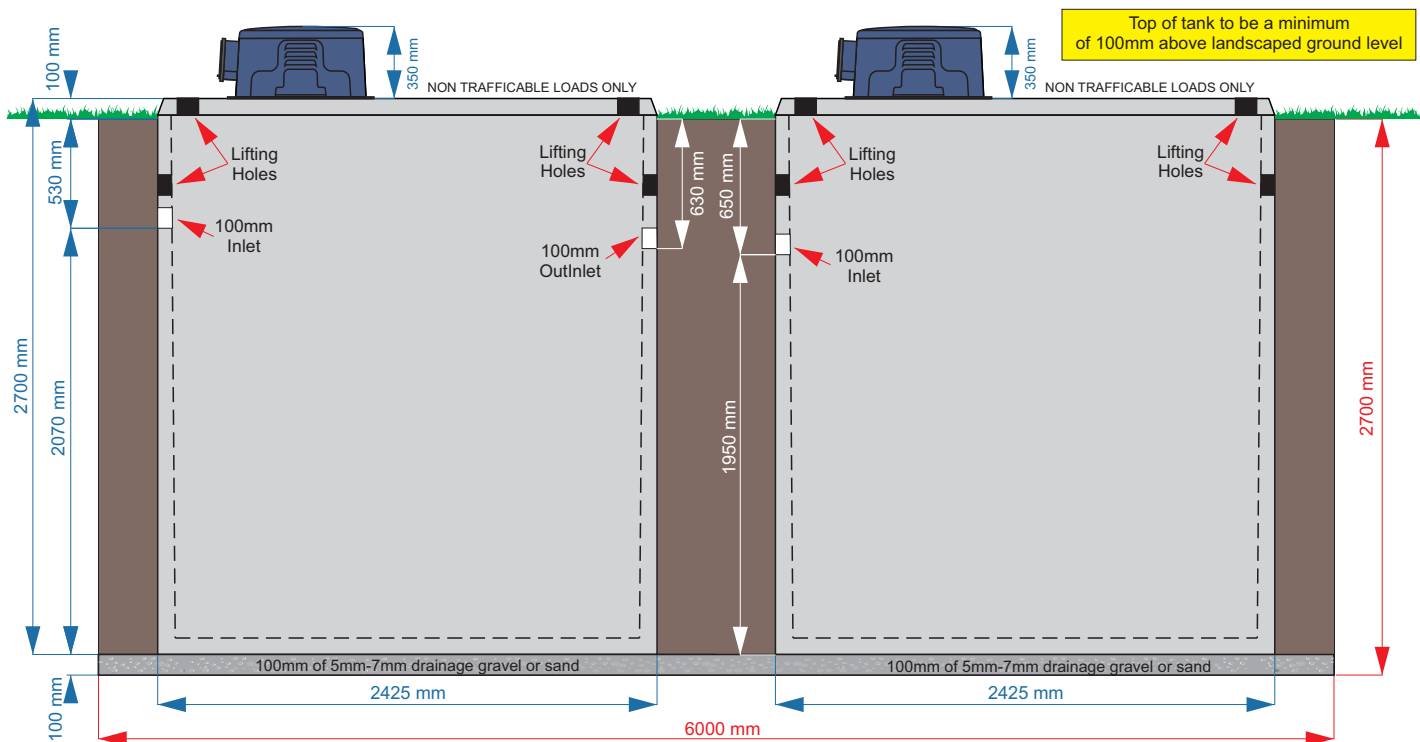


### ABS5000 CONCRETE Excavation Instructions

Tank Total Mass = 8.00 Tonne each



1. Dig hole 6000mm x 3000mm & 2700mm Deep
2. Ensure drainage has a 1/60 fall to the inlet of ABS5000. Risers are available if the tank needs to be installed deeper in the ground to maintain fall
3. Cover base of hole with 100mm of 5mm to 7mm drainage gravel or sand
4. Ensure bottom of hole is level

5. Backfill with soil from Excavation in no more than 500mm equally distributed layers around the tank. Avoid backfilling with rocks over 300mm.

6. To prevent flotation, fill each tank with 5,000lt of water immediately through center hole (see diagram below)

7. Ensure top of gravel/sand is 2070mm (Tank 1) & 1950mm (Tank 2) to bottom of inlet

Ensure the installation location including the future landscaping provision allows for the diversion of stormwater and surface waters away from the system

#### ELECTRICIAN

Connect through conduit on side of ABS5000. Run wire (min 2.5mm) through the flexible conduit provided and up into the switch located in the blower box. Active - Neutral - Earth.

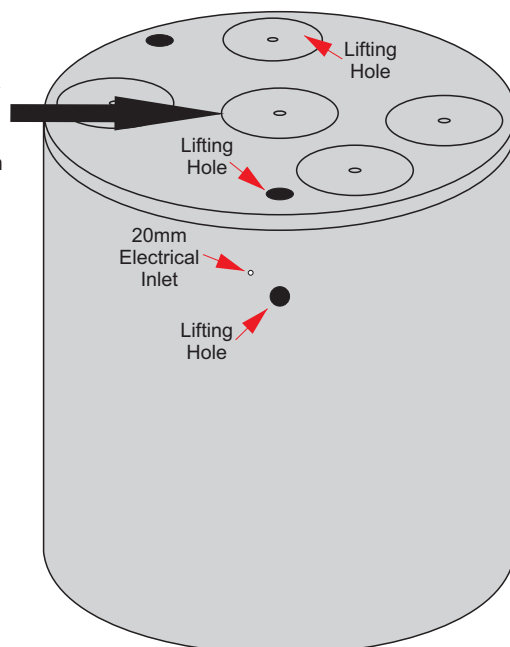
#### TRUCK ACCESS

Unloading of ABS5000 via the back of the truck NOT SIDE. Ensure BACK of truck has clear level 6m wide access to the edge of the hole.

#### REACH OF CRANE/ CRANE TRUCK

To be determined by your crane/ crane truck operator.

**Please Note:**  
5,000lt of water to be placed in this chamber to prevent flotation



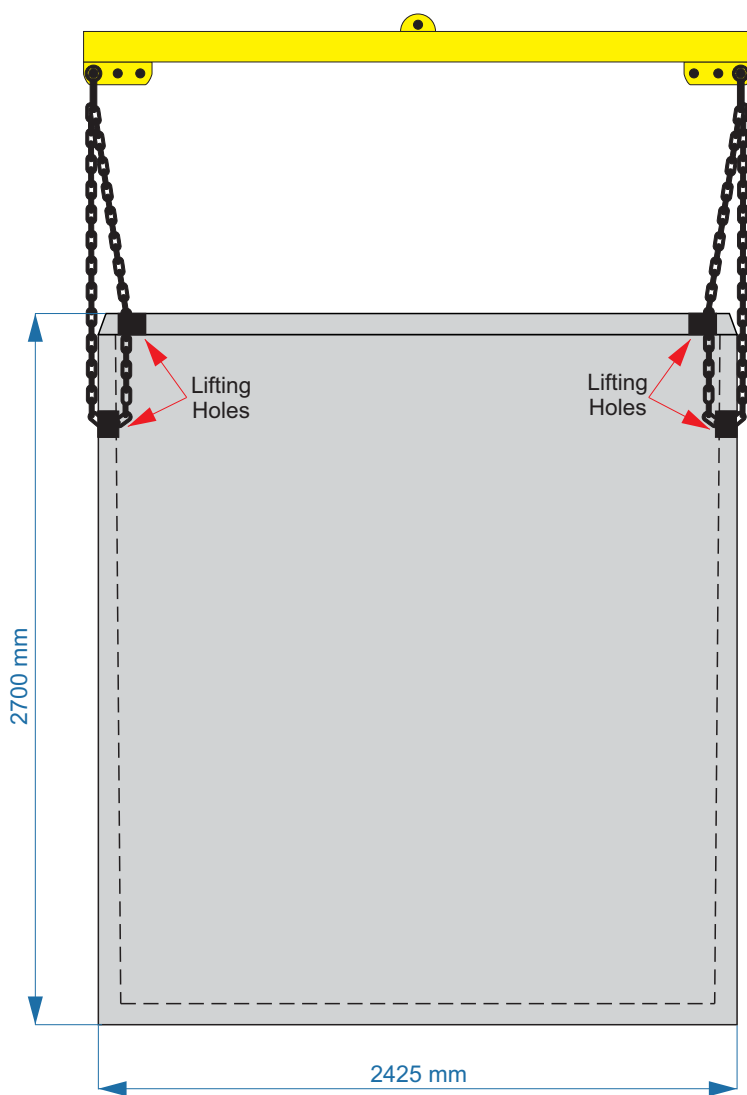
## **ABS5000 CONCRETE Lifting Instructions (Tank 1 & 2)**

Total Mass = 8.00 Tonne

Total Height = 2700mm

Total Width = 2425mm

**USE ONLY CERTIFIED LIFTING BARS**



1. Always use a Spreader Bar and ensure it is certified
2. Lower chains through TOP lifting holes provided in the lid of the ABS5000
3. Loop chains through the lifting holes directly below on the inside wall of the ABS5000
4. Steel reinforcing bars have been installed inside the concrete for lifting purposes. Only lift this tank from these holes
5. If you don't use a Spreader Bar, you risk damaging the ABS5000
6. Ensure the tank is empty before lifting

### **REACH OF CRANE/ CRANE TRUCK**

To be determined by your crane/ crane truck operator.

